



# MERCEDES COLLEGE



## Summer Vacation Care Program Monday 12 December 2022 to Tuesday 31 January 2023

---

### Here's what you need to know:

#### What to bring

- Recess
- Lunch
- Water Bottle
- Hat

#### Please do not bring

- Game Consoles
- Mobile Phone/iPad
- Money (unless directed to)

#### Clothing and sun protection

Please ensure children wear enclosed shoes (thongs and slip on shoes are not suitable) and remember to label their clothing, lunch box and water bottle. As we follow the college policy of 'no hat, no play' be sure to pack a hat too.

#### Healthy food

Please help us reduce waste by packing 'nude food' in reusable containers and avoid packaging or snap lock bags.

Lunch is provided on select days in the program, with dietary needs catered for where possible.

If your child does not like the option supplied, please provide them with a packed lunch.

Due to health regulations we are not able to heat food brought from home. Children will be provided with a fresh snack each afternoon.

#### Hours

Our OSHC Service operates from 7:20am to 6pm every day during the school holidays (excluding public holidays), as well as on Pupil Free days.

**We close for two weeks during Christmas/New Year.** Children must be signed in and out of the program.

#### Child Care Subsidy

Mercedes College is an Approved Provider.

If you wish to claim Child Care Subsidy (CCS), you will need to provide us with your Customer Reference Number (CRN) from Centrelink.

For more information or to obtain a CRN number please visit [servicesaustralia.gov.au](https://servicesaustralia.gov.au)

#### Excursions

The excursion times on the program include the departure and return times. Children must arrive 15 to 30 minutes prior to bus departure times. Before departing, we group the children, discuss specific venue guidelines, provide sunscreen and ensure that everyone has their lunch, hats and water bottles.

# Our rating: exceeding the national quality standards

---

## **My Time Our Place - National Quality Framework for School Aged Care**

Our programs are linked to this framework and planned in consultation with our children and their families. As My Time Our Place educators we are responsive to all children's strengths, abilities and interests.

To learn more, please speak to one of our educators or visit [education.gov.au/my-time-our-place](http://education.gov.au/my-time-our-place)

We strongly encourage children to participate in planned activities yet recognise that children have the right to make their own choices, with alternative activities are provided as necessary.

## **My Time Our Place Outcomes:**

1. Children have a strong sense of identity
2. Children are connected with, and contribute to, their world
3. Children have a strong sense of wellbeing
4. Children are confident and involved learners
5. Children are effective communicators

## **Booking forms and contact**

Please return your booking forms to Mercedes College OSHC

540 Fullarton Road,  
Springfield SA 5062

E | [oshc@mercedes.catholic.edu.au](mailto:oshc@mercedes.catholic.edu.au)

T | 8372 3248

M | 0427 796 425

# Bookings and cancellations

---

## **Bookings**

The Vacation Care program and booking consent form is available mid-Term. Complete your booking form and provide it to us before Monday 19 September 2022 to secure your space.

Forms received after this due date will incur a Late Booking Fee of \$5. Phone bookings are not accepted.

## **Cancellations**

Receipt of a booking form will be a firm commitment to the program. Non-attendance will incur the daily Vacation Care fee of \$55.

## **COVID-19 Safe practices**

We are committed to keeping our OSHC community as safe as possible and continue to implement measures that mitigate the risk of spreading COVID-19.

Educators and visitors on the school grounds are vaccinated for COVID-19.

Further, all educators will conduct hygiene practices including frequent hand washing, sanitisation of high touch areas, and social distancing where possible.

Please keep your child at home if they are unwell.

# Week One: Festive fun!

---

## Monday 12/12



### Hygge Christmas

Type: Incursion

Time: 10am to 4pm

Cost: \$55+\$20 = \$75

Explore the meaning of the Norwegian term 'Hygge' as we decorate a mug and a mug rug ready for a hot chocolate later today.

We will help you assemble and decorate a gingerbread house to share with your family.

Lunch: Savoury pancakes

Snack: Fruit platter

Staff ratio: 1:15

## Tuesday 13/12



### AFL MAX

Type: Excursion

Time: 12:30pm to 2:30pm

Cost: \$55+\$30 = \$85

Make a quirky snowman using a pair of socks and a variety of craft items to add to its charm.

In the afternoon we are heading to AFL MAX for two hours of footy, trampolines, inflatables, and fun games!

Lunch: BYO

Snack: Jam drop biscuits

Staff Ratio: 1:10

## Wednesday 14/12



### Lolly Jar Circus

Type: Incursion

Time: 10:30am to 12pm

Cost: \$55+\$25 = \$80

Lolly Jar Circus is an inclusive arts body, which opens its arms as wide as possible to those wishing to join. Learn new skills, practice, and persist.

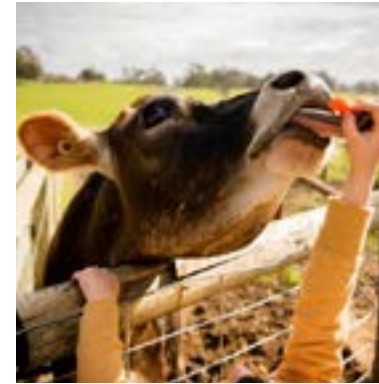
Follow the recipe and measure all the ingredients needed to make Rudolph's Red Nose Cookie Jar.

Lunch: BYO

Snack: Noodles

Staff Ratio: 1:10

## Thursday 15/12



### Hahndorf Farm Barn

Type: Excursion

Time: 9am to 3pm

Cost: \$55+\$30 = \$85

Create happy memories at the Hahndorf Farm Barn today. Experience farm life as you cuddle and feed some of the animals and milk a cow!

Relax after our day out. You may like to make a Christmas decoration using clothes pegs.

Lunch: BYO

Snack: Banana muffins

Staff Ratio: 1:10

## Friday 16/12



### Make My Bear

Type: Incursion

Time: 9:30am to 2:30pm

Cost: \$55+\$30 = \$85

See your soft toy come to life as you fill it with stuffing, add a recorded message, and design a t-shirt for it to wear to our picnic.

Join us for some hilarious Christmas charades this afternoon.

Lunch: Teddy Bear's Picnic

Snack: Icecream and jelly

Staff Ratio: 1:15

# Week Two: Festive fun!

---

## Monday 19/12



### Movie: Lyle, Lyle, Crocodile (PG)

Type: Excursion  
Time: 9am to 2pm  
Cost: \$55+\$20 = \$75

Meet the Primm family and Lyle, a singing crocodile who loves baths, caviar, and great music.

Then, make a Lyle keychain and join a karaoke session of our favourite songs from the movie.

Lunch: BYO  
Snack: Banana bread  
Staff Ratio: 1:15

## Tuesday 20/12



### Gaming Party Hire

Type: Incursion  
Time: 9:30am to 11:30am  
Cost: \$55+\$25 = \$80

We know you have been waiting for Michael's return! Enjoy your morning exploring all the games on offer.

Create a sensory experience making a rosemary wreath and an orange and cinnamon candle.

Lunch: BYO  
Snack: Mug cinnamon roll  
Staff Ratio: 1:15

## Wednesday 21/12



### Indigenous Cultural Experience

Type: Excursion  
Time: 9am to 2pm  
Cost: \$55+\$20 = \$75

Meet Liesl at Wirraparinga (Brown Hill Creek) and listen to stories, learning more about Indigenous culture.

Extend your Kurna vocabulary and create a stunning nature wreath using leaves found on our walk.

Lunch: BYO  
Snack: Traditional damper  
Staff Ratio: 1:10

## Thursday 22/12



### Christmas Geocaching

Type: Incursion  
Time: 10am to 11am  
Cost: \$55+\$25 = \$80

Geocaching is a treasure hunt using a GPS device to find hidden items. Work in groups to follow coordinates to Christmas treats.

Later, join us in the kitchen to make shortbread and chocolates to take home.

Lunch: BYO  
Snack: Dips and veggie platter  
Staff Ratio: 1:15

## Friday 23/12



### Christmas Celebrations

Type: Incursion  
Time: 10am to 4pm  
Cost: \$55+\$20 = \$75

Make your own signature Christmas wrapping paper this morning.

Then, celebrate Christmas with our Kris Kringle lucky dip, and chill out with a Christmas movie or two.

Lunch: Christmas fare  
Snack: Mini pavlovas  
Staff Ratio: 1:15



# Week Three: January joy!

---

**Monday 9/1**



## SA Rocks

Type: Incursion

Time: 10am to 11am

Cost: \$55+\$20 = \$75

Paint a design and message on a rock that you can hide for someone else to find. You might just make their day!

Then, Auslan is the sign language of the Australian deaf community and we'll refresh our knowledge of this special language.

Lunch: Quiche

Snack: Fruit platter

Staff Ratio: 1:15

**Tuesday 10/1**



## Science Collective

Type: Excursion

Time: 9:15am to 2:30pm

Cost: \$55+\$30 = \$85

Who knows what experiments our crazy science presenters will have for us this visit.

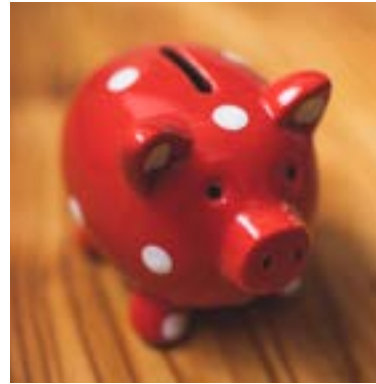
Make a vase using egg cartons. Decorate it with paint and other fun craft materials.

Lunch: BYO, Tusmore Park

Snack: Dips and veggie platter

Staff Ratio: 1:10

**Wednesday 11/1**



## Money Box tips for saving

Type: Incursion

Time: 10am to 3pm

Cost: \$55+\$20 = \$75

A new year is a good time to begin a savings plan. Decorate a money box and check out our savings tips.

We have a challenge: can you construct a roller coaster using straws?

Lunch: BYO

Snack: Lemonade scones

Staff Ratio: 1:15

**Thursday 12/1**



## Zoo visit

Type: Excursion

Time: 9:30am to 2pm

Cost: \$55+\$30 = \$85

Adelaide Zoo is home to 2,500 animals. It is full of diversity, colour, and unique things to see and do.

Learn the process used to make plantable seed paper. Take some home to plant in your garden.

Lunch: Mini quiches

Snack: Dips and veggie platter

Staff Ratio: 1:15

**Friday 13/1**



## Oil on canvas

Type: Incursion

Time: 10am to 12:30pm

Cost: \$55+\$20 = \$75

Try out this nifty technique... we know that you will be thrilled with your masterpiece!

We will deconstruct old technology or build something from recycled materials.

Lunch: Chicken and salad

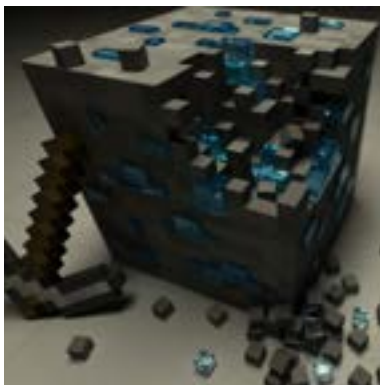
Snack: Fruit platter

Staff Ratio: 1:15

# Week Four: January joy!

---

## Monday 16/1



### Minecraft Madness

Type: Incursion

Time: 10am to 11:30am

Cost: \$55+\$20 = \$75

Enter through the Nether Portal to crack the decoders and explore mazes. Make torches, bookmarks, and creepers to keep.

Keep the madness going with lots of Minute to Win it challenges!

Lunch: Mini pasties

Snack: Dips and veggie platter

Staff Ratio: 1:15

## Tuesday 17/1



### Roller Skating

Type: Excursion

Time: 9:15am to 12:30pm

Cost: \$55+\$25 = \$80

You asked and we listened! Enjoy skating around the circuit with your friends to the sounds of the disco beat.

Plant lemon seeds in a cup. Take good care of them and watch them grow!

Lunch: BYO

Snack: Ginger caramel biscuits

Staff Ratio: 1:10

## Wednesday 18/1



### Ros Stoner art workshop

Type: Incursion

Time: 10am to 11:30am

Cost: \$55+\$20 = \$75

Ros will be here to guide you with a Van Gogh experience. We look forward to seeing your *Sunflower* art!

Keep our passion for sustainability alive as we make beeswax wraps to minimise plastic use.

Lunch: BYO

Snack: Fruit platter

Staff Ratio: 1:10

## Thursday 19/1



### Theatre: Frozen Jr

Type: Excursion

Time: 9am to 12:30pm

Cost: \$55+\$30 = \$85

Be sure to book early for this exciting live performance of *Frozen Jr*. Congratulations to the Adelaide Youth Theatre Co. for bringing this to life.

Relax with our favourite mindful activity. Choose beautiful colours to make a sand art masterpiece.

Lunch: BYO

Snack: Cornflake cookies

Staff Ratio: 1:10

## Friday 20/1



### Adelaide Aquatic Centre

Type: Excursion

Time: 9:30am to 2pm

Cost: \$55+\$30 = \$85

Join us for a fun morning swimming, plummeting from diving boards, and racing down water slides!

Make a simple puppet using items found in our making boxes.

Lunch: BYO

Snack: Nachos

Staff Ratio: 1:5

# Week Five: January joy!

---

## Monday 23/1



### Rev It Up Racing

Type: Incursion

Time: 9:30am to 11:30am

Cost: \$55+\$20 = \$75

Bring your best game today!  
Get behind the wheel and show us your virtual driving skills.

This afternoon we will get out of overdrive and relax with jewellery making.

Lunch: BYO

Snack: Lemon slice

Staff Ratio: 1:15

## Tuesday 24/1



### Movie: The Amazing Maurice (PG)

Type: Excursion

Time: 9:15am to 12:30pm

Cost: \$55+\$30 = \$85

This story follows Maurice, a streetwise, ginger cat who has found the perfect scam.

Anyone for bubbles? Make your own bubble wand and let's see who can make the biggest bubbles!

Lunch: BYO

Snack: Wedges

Staff Ratio: 1:15

## Wednesday 25/1



### Wet 'n' Wild Wednesday

Type: Incursion

Time: All day

Cost: \$55+\$25 = \$80

Celebrate Australia Day early with our traditional cricket match and keep your eyes peeled for the icecream van after lunch!

Work off the treats with slip and slide on the oval.

Lunch: BBQ

Snack: Fruit platter

Staff Ratio: 1:15

## Thursday 26/1



### Australia Day Public Holiday

Our service will be closed today.

Enjoy this public holiday with your family!

## Friday 27/1



### Bring Me Magic

Type: Incursion

Time: 10:30am to 11:30am

Cost: \$55+\$20 = \$75

Welcome Mickster the Trickster! He will introduce us to a world where anything is possible.

Visit the Mercedes College OSHC Wellness Day Spa. Make lip balm and a divine soap to take home.

Lunch: BYO

Snack: Rice Bubble slice

Staff Ratio: 1:15



# Week Six: January joy!

---

## Monday 30/1



### Fairy Houses with Laurel

Type: Incursion

Time: 10am to 11:30am

Cost: \$55+\$20 = \$75

Happy New Year Laurel! We cannot wait to make a fabulous fairy house with you today.

Water play -- bring water pistols and be prepared to get very wet!

Lunch: BYO

Snack: Fairy bread

Staff Ratio: 1:15

## Tuesday 31/1



### Rainbow Yoga with Moveit Fitness

Type: Incursion

Time: 10am to 11am

Cost: \$55+\$25 = \$80

It's all about rainbows today! Celebrate the end of our holidays with a fun yoga session.

Tie-dye a pair of socks using rainbow sharpies.

Lunch: Salad wraps

Snack: Dips and veggie platter

Staff Ratio: 1:15

## Wednesday 1/2



### School's Back!

Head back to the classroom ready for an amazing 2023 and we'll see you at the end of Term 1.